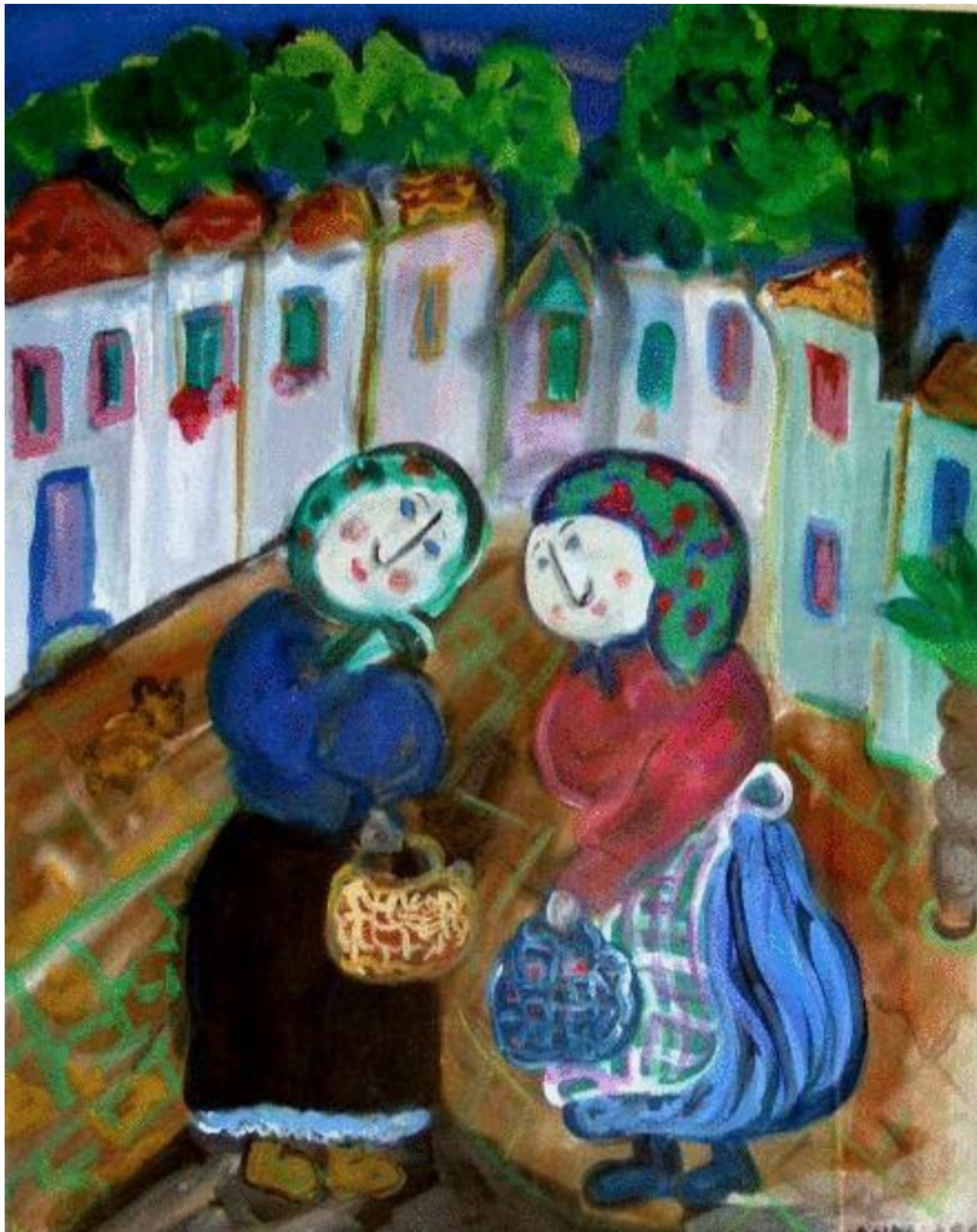




ART WORLD  
GALLERY

STOPPED FOR A NATTER  
DORA HOLZHANDLER

Sold



REF: 64277

Height: 53 cm (20.9")

Width: 42 cm (16.5")

## Description

A very strong work by this wonderful artist. Painter in the naïve style, born France. She became a student at Anglo-French Art Centre in London in 1946. She exhibited at young contemporaries in 1949 and at Beaux Arts Gallery in mixed exhibitions, and many such exhibitions in Britain and abroad. Had a solo exhibition at Chenil Gallery in 1960, others including a series at Langton Gallery in the 1970s, Concourse Gallery, 1984-5, Crane Kalman, 1985, Graham Modern Gallery in New York in 1986, Brighton Art Gallery and Museums and many notable private collectors hold examples of her work. The Ben Uri Gallery held a retrospective in 2006.