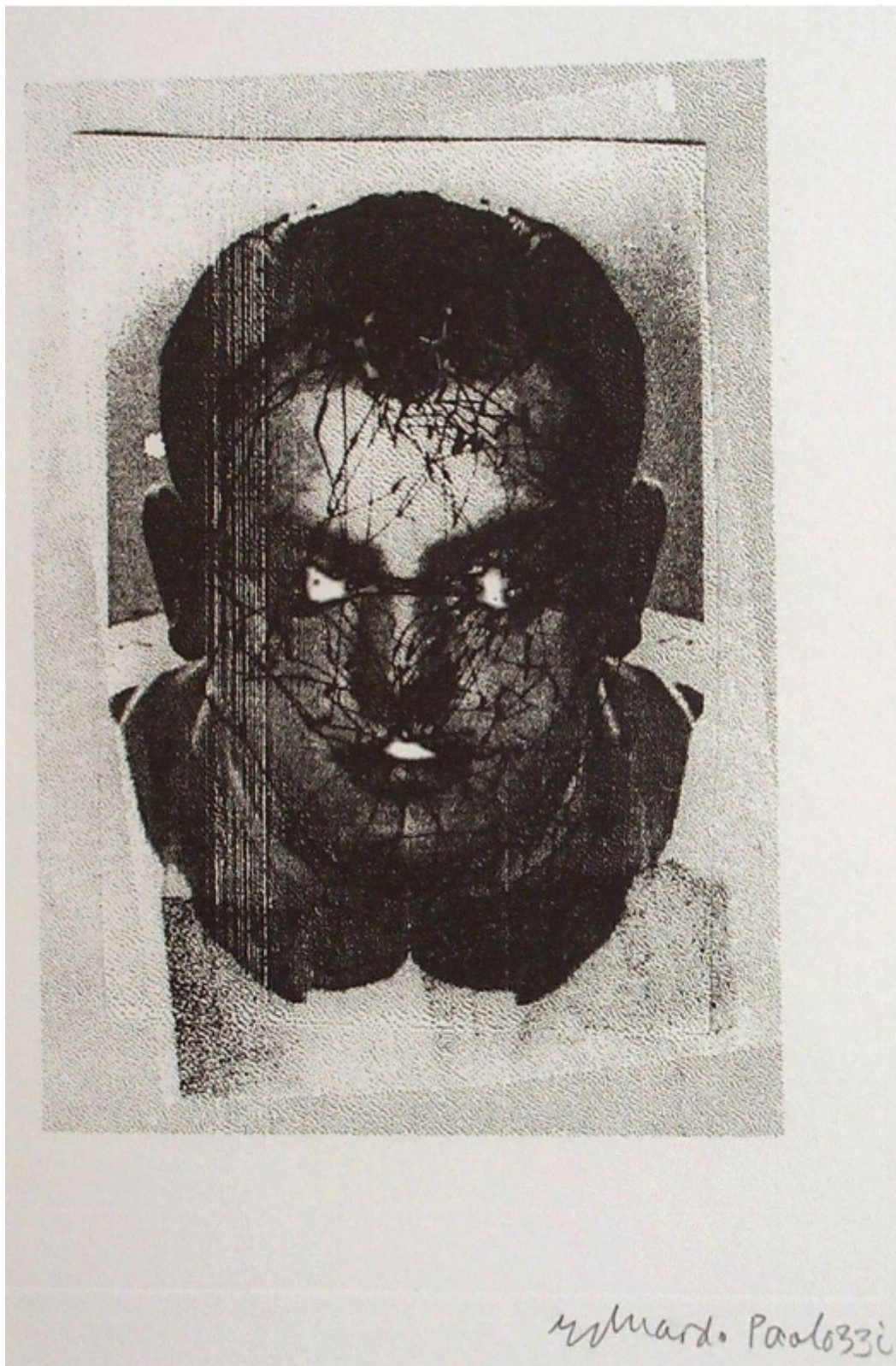




ART WORLD
GALLERY

PORTRAIT UNKNOWN
EDUARDO PAOLOZZI



Art World Gallery

Pop up gallery currently located at 22 St Mary's Street, Shrewsbury, SY1 1ED
Tel: +44 (0)1743 343452 popupgallery@callaghan-finepaintings.com www.artworldltd.com

REF: 64170

Height: 25 cm (9.8")

Width: 20 cm (7.9")

Description

Sculptor, draughtsman, designer, printmaker and teacher, born in Leith, Midlothian, of Italian parents. Studied at Edinborough College of Art, 1943, and Slade School of Fine Art, 1944-7. After Army service he worked in Paris, 1947-50, his work being shown at Galerie Maeght in 1948. His first one man show was in New York at Betty Parsons Gallery, 1960. By then Paolozzi had been represented at Venice Biennale in 1952, Sao Paulo Bienal in 1957, Documenta 11, Kassel, 1959, and in various touring shows. After then Paolozzi's work was shown internationally, including Tate Gallery retrospective, 1971, and seventieth birthday show, Yorkshire Sculpture Park, Wakefield, 1994. Was an influential teacher, including St. Martins School, 1955-8, where he taught sculpture; Royal College of Art, where he lectured in ceramics, 1968-89, from which time he was visiting professor; and at schools in Hamburg, Cologne, Munich, Germany, starting in 1960, teaching ceramics and sculpture. Winner of many awards. Produced several films and books. Among his commissions was a cast iron sculpture to Bruckner the Australian composer, in Linz, 1977; four cast aluminium doors for Hunterian Gallery, Glasgow, 1976-80; Master of the Universe, a bronze, for Kowloon Park, Hong Kong, 1987-88; and Newton after James Watt, bronze for Design Museum, London, 1989-90. Elected Royal Academy, 1979; Knighted in 1988. Lived in London.